

AC622-2

product group: **Advanced Contractor's Series**
system type: **Dual Horn-Loaded 12" Mids + 2" HFD**

construction

The AC622-2 is a horn loaded, high Q, 2-way high/mid system in a computer optimized enclosure. Loudspeaker complement consists of twin proprietary midrange 12"s and a single Unified Titanium Diaphragm™ 2" compression driver. Waveguides utilize McCauley ClearFiber™ biaxially-stitched horn manufacturing technology. The enclosure is constructed of durable 12-ply void-free birch laminate, dadoed for strength and durability. Integrated eyebolt suspension points facilitate permanent installation. Perforated steel is employed for frontal protection of the loudspeaker complement.

Features:

- Integrated Eyebolt Suspension**
- McCauley Premium Class Componentry**
- 12 ply Dadoed Construction**
- Durable ProCoat™ Elastomeric Finish**

the idea behind it

The AC622-2 was designed as a dedicated high/mid system for permanent installation with an emphasis on controlled coverage over long distances. Its extraordinary acoustic quality is a direct result of the implementation of McCauley's proprietary UTD™ technology, landing this system our highest performance rating. This system integrates with other McCauley products, offering consistent coverage and a uniform appearance.

Applications:

- Stadiums & Arenas**
- Large Format Installation**



performance parameters

physical properties

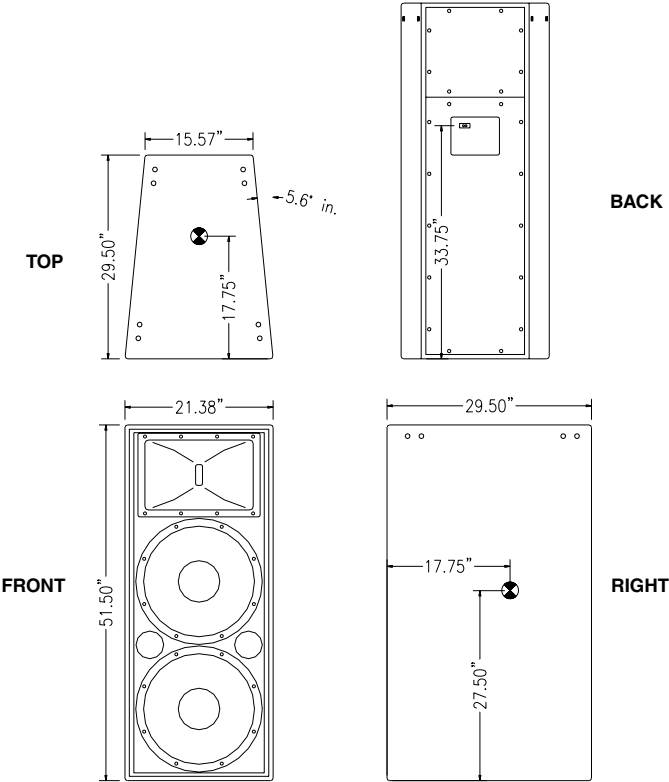
power handling	750w RMS	weight	234lbs / 106kgs
frequency response	70Hz - 20kHz	dimensions	
nominal impedance		inches	52H x 21W x 30D
Mid	4Ω	centimeters	132H x 53W x 76D
High	16Ω	finish	ProCoat™
sensitivity		enclosure material	5/8" 12-ply Finland Birch
Mid	109db	construction	rabbet & dadoed
High	115db	suspension	integrated eyebolt
maximum output SPL		connectors	binding posts
Continuous	132db	transducers	(2) 12" Midrange
Peak	138db		(1) UTD™ HF Driver
recommended crossover	80Hz / 1kHz	recommended subwoofer	AC588, AC288
directivity/coverage	45°x40° (HxV)		

technical specifications

AC622-2
2-WAY MID / HIGH CONTRACTOR

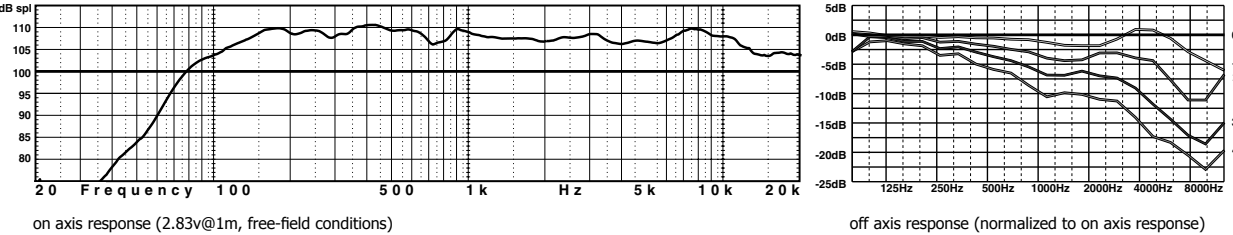
dimensional illustrations

architectural specifications



The loudspeaker shall be a two-way horn loaded "Long Throw" type. It shall comprise two low/mid ClearFiber™ horn sections utilizing 12" transducers and one high frequency ClearFiber™ horn flare utilizing a 2" throat compression driver. The 12" low/mid transducers shall incorporate low distortion carbon fiber cone technology and the "Focused Field" removable magnet structure design. They shall have a power capacity of 600 watts RMS and 1200 watts peak and a sensitivity of 109 dB SPL at 1 meter with 2.83 volts into a nominal 4 ohm load. The high frequency driver shall incorporate "Unified Titanium Diaphragm" technology with a power handling capacity of 150 watts RMS above 1.5kHz and a sensitivity of 115 dB SPL at 1 meter with 2.83 volts into a nominal 16 ohm load. The combined loudspeaker system shall be capable of 132dB SPL continuous and 138 dB SPL peak maximum output. The loudspeaker system shall have an effective operating range of 100 Hz to 18 kHz +/- 3 dB (70Hz to 22 kHz - 10 dB). The loudspeaker shall offer nominal coverage angles of 45° horizontal, and 40° vertical. The AC622-2 shall weigh a total of 275 lbs. and shall measure 51.5 inches tall, 21.4 inches wide (15.2 inches at rear), 29.5 inches deep with a trapezoidal shape and the sides shall be angled at 5.6° from front to back. The AC622-2 enclosure shall be constructed of 12-ply birch hardwood and shall have a weather and wear resistant ProCoat™ elastomeric finish. The AC622-2 enclosure shall incorporate 10 position industry standard ProTrack™ flyware, two each top and bottom. Electrical connections shall be made via standard binding posts or barrier strips. The loudspeaker shall be the McCauley AC622-2.

response data



polar data

Outer ring is +6dB, each ring represents an additional -6dB down.
For vertical plots, 90° represents the top of an enclosure, 270° is the bottom.

