

technical specifications

**18" LOW FREQUENCY
STAGE PERFORMANCE**

SA188

product group:
system type:

**Stage Performance (GROUNDSTACK)
Dual Direct Radiating LF 18"s**



construction

The SA188 is a dedicated LF / subwoofer system in a trapezoidal, computer optimized enclosure. Loudspeaker complement consists of a twin 18" LF woofers separately loaded into individual, vented sub-enclosures. The enclosure is constructed of durable 12-ply void-free birch laminate, dadoed for strength and durability. Handles are balance-optimized to facilitate transportation. Perforated steel is employed for frontal protection of the loudspeaker complement.

Features:

McCauley Performance Class Componentry
9 ply Dadoed Construction
Durable ProCoat™ Elastomeric Finish



the idea behind it

The SA188 was designed as multipurpose, dedicated low frequency / bass "workhorse" system for medium to large scale sound reinforcement duty. Its durable construction and reliable performance make this system an excellent choice for pro sound companies. The SA188 offers high quality bass output in a manageable, durable enclosure. This system also integrates easily with other McCauley SA™ products, offering consistent coverage and a uniform appearance.

Applications:

Live Performance Venues
Rental P.A.
Fairgrounds



Trapezoidal



Groundstack



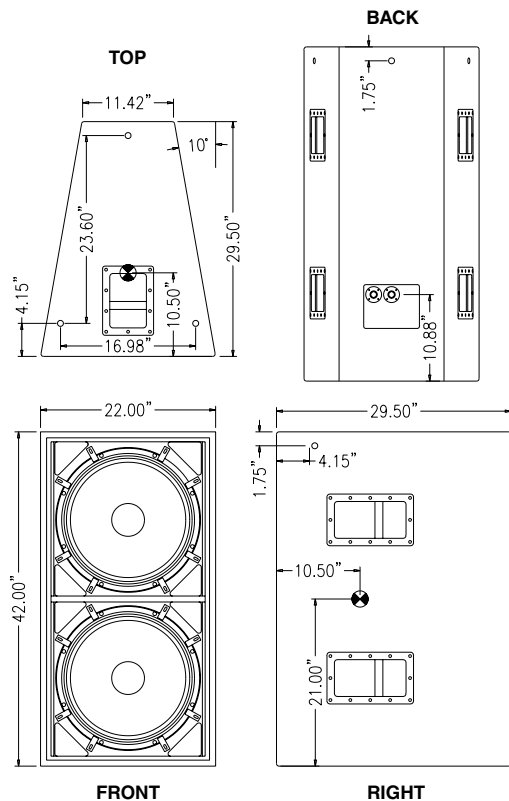
performance parameters

power handling	900w RMS
frequency response	25Hz - 800Hz
nominal impedance	4Ω
sensitivity (2.83v @ 8Ω, 1w, 1m)	104db
maximum output SPL Continuous Peak	130db 136db
recommended bandpass	20Hz / 180Hz

physical properties

weight	185lbs / 83kgs
dimensions inches centimeters	42H x 22W x 30D 106H x 56W x 76D
finish	ProCoat™
enclosure material	5/8" 12-ply
construction	rabbet & dadoed
suspension	none
connectors	parallel NL4
transducers	(2) 18"s
recommended mid/high	SA122-2, SA155-2

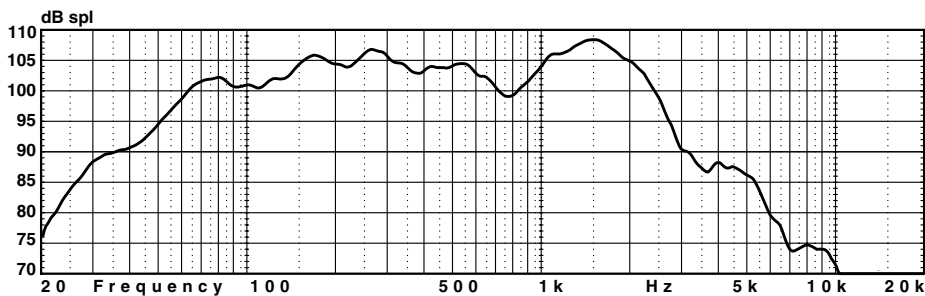
dimensional illustrations



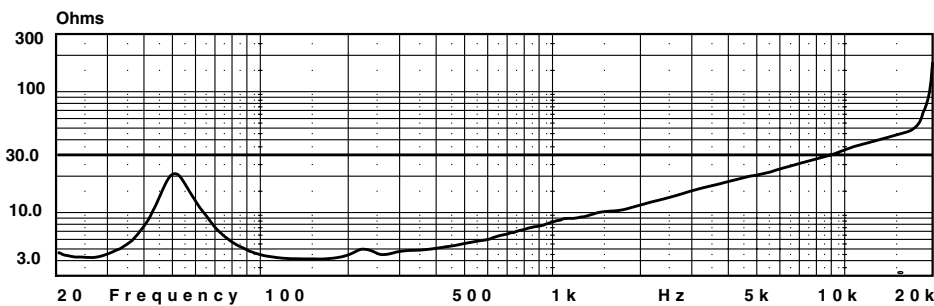
architectural specifications

The loudspeaker shall consist of two 18" low frequency drivers mounted in a bass reflex enclosure. The low frequency section shall contain two 18" "Focused Field" drivers with a power handling capacity of 800 watts RMS and shall have a sensitivity of 104 dB SPL measured at 1 meter with 2.83 volts into a nominal 4 ohm load. The loudspeaker system shall be capable of 130 dB SPL continuous and 136 dB SPL peak maximum output. The loudspeaker system shall have an effective operating range of 45 Hz to 1 kHz +/- 3 dB (40Hz to 3 kHz -10 dB). The enclosure shall weigh a total of 185 lbs. and shall measure 42 inches tall, 22 inches wide (9.5 inches at rear), 30 inches deep. The enclosure sides shall be angled at 10o from front to back forming a trapezoidal shape. The enclosure shall be made of 12-ply birch hardwood and shall have a weather and wear resistant ProCoat™ elastomeric finish. The enclosure shall incorporate two steel handles on each side and one on the top, for easy mobility. Electrical connections shall be made via paralleled Neutrik NL-4 connectors, or optional NL-8 or EP series connectors. The loudspeaker shall be the McCauley SA188.

response data



on axis response (2.83v@1m, free-field conditions)



impedance